

Transport



- Electric-power dispatching
- Diesel dispatching
- Wagon monitoring
- Complex solutions

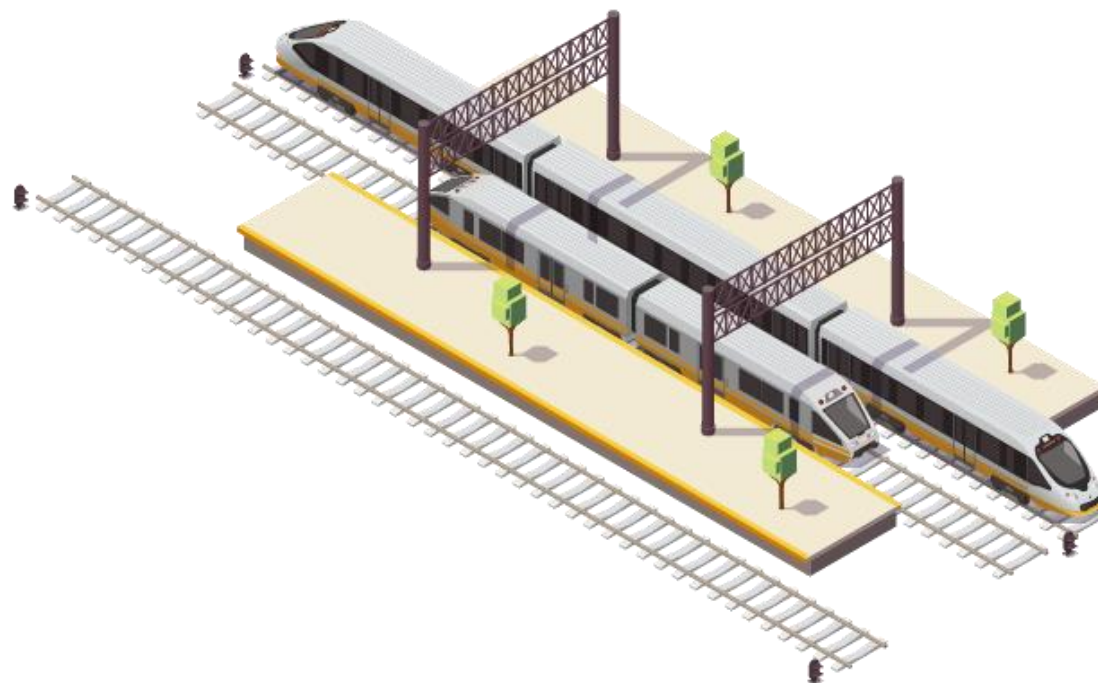
Energy Management in Rail Transport

Energy management in Rail Transport



Partner for the development and management of information systems

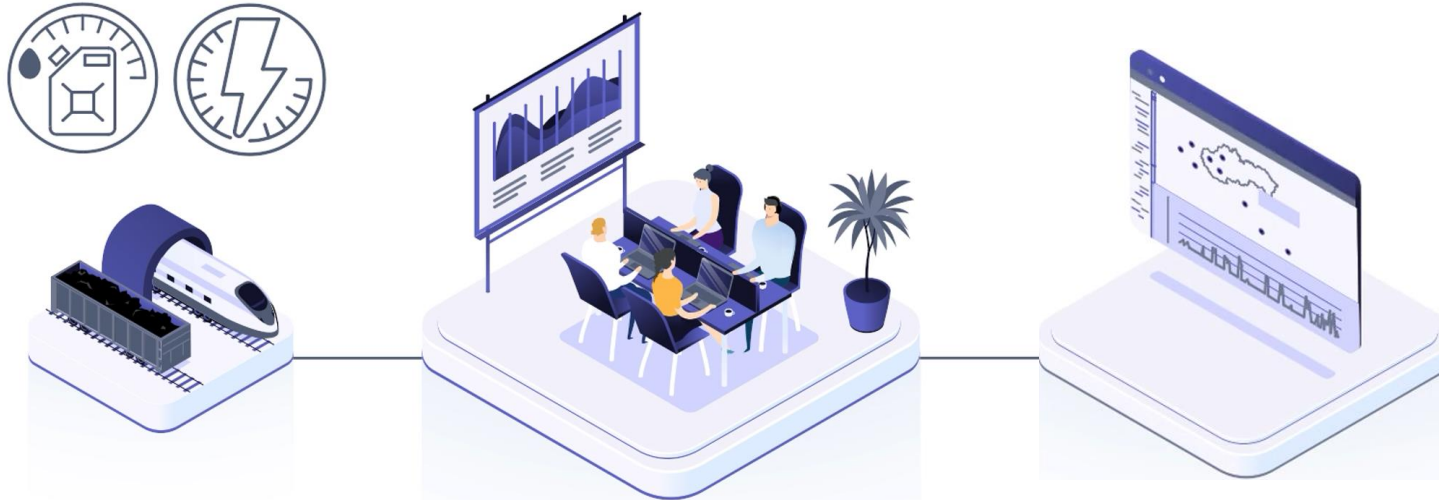
- Our unique information system for the transport and energy sectors
- 11 years of experience in the field of railway transportation
- Highly qualified specialists in consulting and analytical research
- Over 13 000 locomotives and wagons in our management system



Main features



Power Dispatching



- Real-time measurement
- Current position

- Optimal operation
- Efficiency evaluation
- Anomaly detection
- Train drivers comparison
- Notifications and alarms

- Comprehensive view
- Cost reduction
- Energy consumption planning
- Condition of locomotives and wagons under control

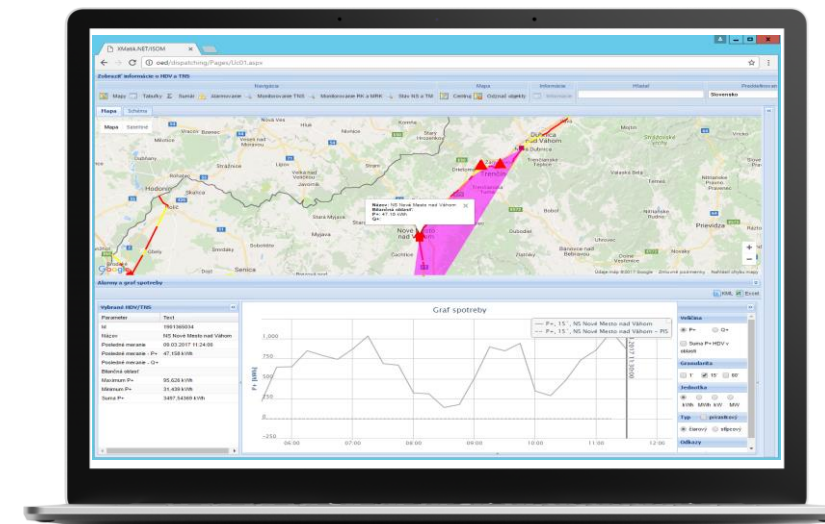
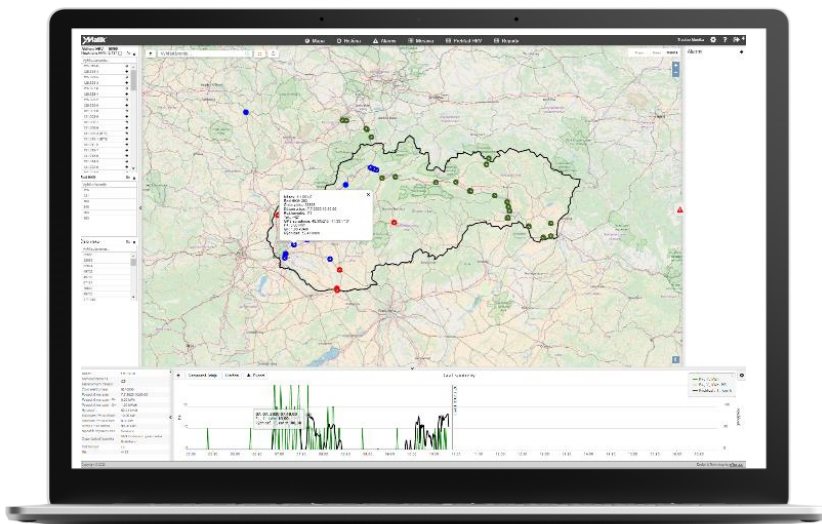
Energy management in Rail Transport



The customer experience

- The difference in power consumption with the same set on the same route can be up to 20%.
- Sophisticated energy management allows us to reduce the power consumption by up to 10%.
- Based on the electricity supply prices, it is possible to determine the energy intensity of the locomotive and to estimate the expected level of cost savings by simulating the transfer of freight traffic to the time of lower tariffs.

Our references



Management and operation
of the railway infrastructure



Rail freight transport services



ŽELEZNIČNÁ SPOLOČNOSŤ SLOVENSKO

Passenger transport services



IT Solutions and Services



EURÓPSKA ÚNIA

Európsky fond regionálneho rozvoja
OP Integrovaná infraštruktúra 2014 – 2020



MINISTERSTVO
DOPRAVY A VÝSTAVBY
SLOVENSKEJ REPUBLIKY

www.sfera.sk

**THANK YOU
FOR YOUR ATTENTION**

DIRECT CONTACT

Peter Chochol

Sales Director

peter.chochol@sfera.sk

+421 905 478 196

<https://transport.sfera.sk/en>

Enlit **STAND**
Connect. Inspire. Evolve. **8.F74**

SFÉRA, a.s.
Karadžičova 2
811 08 Bratislava
Slovak Republic

ACKNOWLEDGEMENT: :

This presentation was created thanks to the support of the Operational Programme Integrated Infrastructure for the project: International Centre of Excellence for Research on Intelligent and Secure Information and Communication Technologies and Systems II. stage, ITMS code: 313021W404, co-financed by the European Regional Development Fund.